

Providence Christian School

2017/18 Prospectus



P.C.S
Office: 01851 704148
email:
office@lics.org.uk

Web:
www.lics.org.uk

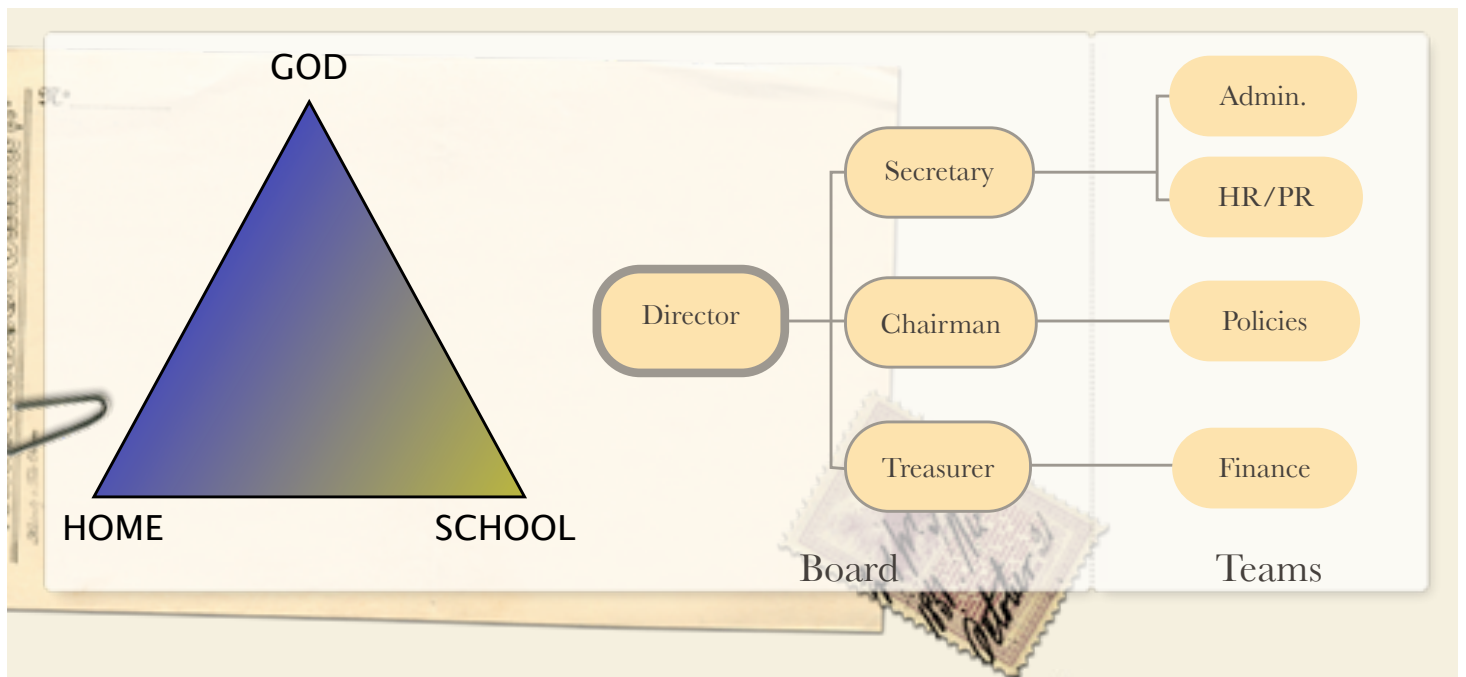
Cearns Community Centre
Cearn Shulasgair
Stornoway
Isle of Lewis
HS2

*"to educate & nurture each child,
both in character & intellect,
to the glory of God"*

Beginning in 1999, Lewis Independent Christian School started off with one class and 9 pupils. Now with infant and junior classes, specialist teaching for music, art and languages, the school was renamed in 2016 as Providence Christian School. Since '99 there have been many trials, joys and lessons, coupled with a steady sense of God's pleasure and his prospering of the work. Our school is **open to all** who wish to give their children an education that honours God, respects the Bible, and strives for a biblical way to teach every lesson and every subject, without sacrificing academic excellence.

Founded on the principle that biblical truth must be central to the whole

curriculum, PCS makes use of a variety of resources to bring together a Christ-centred syllabus. The school has also made progress towards the development of a consistent biblical framework for all the lessons. Some resources are already Christian-based, such as *A Beka* readers and *Veritas* (Bible); others, such as *Heinemann* maths and *Jolly Phonics* are adapted for our use. Both French and Gaelic are integrated into the weekly timetable. Every topic carries an academic and spiritual lesson. With a strong emphasis on Bible knowledge, English and Maths, a full range of subjects is taught. Outdoor trips, recycling projects, missionary talks, art, music, swimming, sports competitions and athletics are all part of school life.



DISCIPLINE

The authority of parents and teachers is clearly upheld, and pupil behaviour is expected to show respect for God, teachers, other adults and fellow pupils. Our commitment to Biblical ethics ensures that the discipline of the school is firm but gentle and encourages prayer by teachers and pupils.

A copy of the Discipline Policy is available on request.

ETHOS

The aim of the school is to provide an atmosphere in which God is honoured and given His rightful place in the life of the school. With a Biblical understanding of the school and the home as a partnership under God (see above picture), the school is committed to parental involvement in every aspect of school life.

Along with regular meetings with the teachers, this is designed to foster co-operation, happiness and a family atmosphere in the life of the school. In this way, parents and teachers work closely together to ensure that the school is Christ centred, parent controlled, teacher directed and child oriented.

FUNDING

The school is maintained financially by the sacrificial giving of parents and donations from other interested individuals and groups.

Gift Aid and Standing Order forms are available on request. The school also has a Building Appeal.

While no fee is mandatory, current guidelines suggest a donation of £2,000 for a first child, with a reduced scale for subsequent children in the school. However please note that these are recommended giving and admission has never been dependent on ability to meet these targets. The school acknowledges the sovereignty of God in supplying all our needs.

ADMISSIONS POLICY

Providence Christian School is an independent non-denominational Christian school open to all children.

We welcome children from any background. Parents wishing to enrol their children are invited to an interview with a Board member and a teacher.

GOVERNMENT

Providence is a parent-led school, and the deep involvement and commitment of our families is something we cherish. All parents or guardians are welcome to use to the school, and those who able to sign the PCS Constitution are eligible to serve on the Board of Governors. Governors are elected annually at the AGM. The headteacher is *ex officio* a member of the Board. The graphic above outlines the structure in place and further information is readily available on request.